

PUNTA BIANCA

WATER FORMS THE ROCK

Punta Bianca Restoration – Architectural Concept

At Punta Bianca, our intervention is guided by a principle of restraint. The existing structure, shaped by time and weather, sits within a landscape sculpted by waves, wind, and salt over millennia. Our concept honors this context – not by adding, but by revealing.

We sought to minimize disruption to the natural environment, allowing the architecture to emerge from the land rather than rest upon it. Materials became our primary language: limestone and local stone dominate every surface, blending seamlessly into the rocky coast. The visitor is immersed in textures that feel born of the earth – raw, honest, timeless.

A single contrasting gesture – the corten steel staircase – marks a moment of transition. Symbolic of entering a new era, it connects levels both physically and metaphorically. Its warm, weathered finish reflects the site's enduring strength and layered history.

The architecture's form follows the sea. Soft curves in the plan and roofline echo the rounded stones shaped by surf, making both interior and exterior spaces feel fluid and welcoming. Nothing is sharp or intrusive – everything is shaped as if by nature's hand.

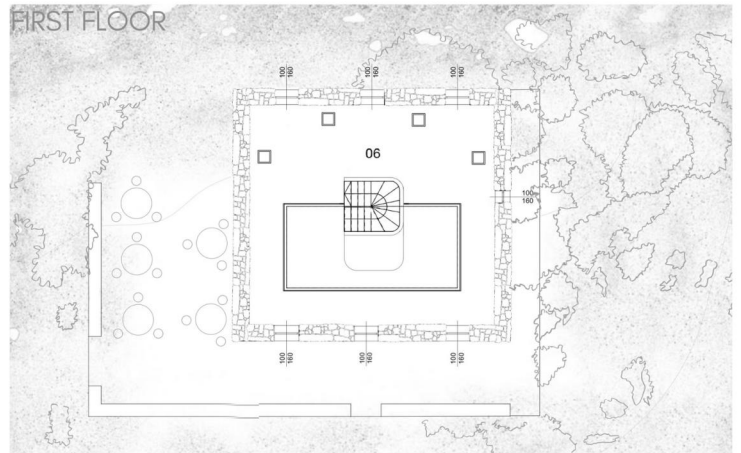
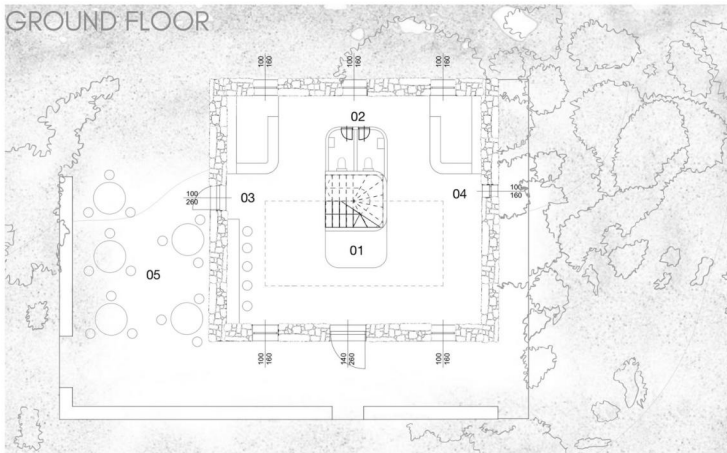
Respecting the original silhouette of the building was essential. The new roof is clad in native Sicilian alabaster – a translucent, local stone. By day, it filters light into the interior with a soft glow; by night, it radiates gently outward, allowing the building to breathe with its environment.

Inside, the restored space houses an exhibition of sculptures, paintings, and natural artifacts – including coral stone – all rooted in the region. These elements tell the story of place, culture, and nature in harmony.

Through this project, we aimed not to overwrite history, but to preserve and extend it – offering Punta Bianca a renewed identity grounded in memory, matter, and light.







FLOOR PLAN CONCEPT

SMALL SPACE - HUGE FEELING

The rounded formal language continues throughout the floor plan, reflecting the soft, organic shapes found in nature.

Following the reinterpretation of the original structure, the layout now offers generous and fluid circulation space.

Two easily accessible restrooms are located behind the staircase.

A small café opens directly to the exterior, encouraging interaction with the surrounding landscape. On the opposite side, a gift shop is positioned, with a compact storage area neatly tucked beneath the stairs — ensuring functional efficiency without compromising spatial clarity.

